



# Don't do Business in the Dark: LEI for Enhanced Cross-border Payments

ACTSR Treasurers Forum & General Assembly

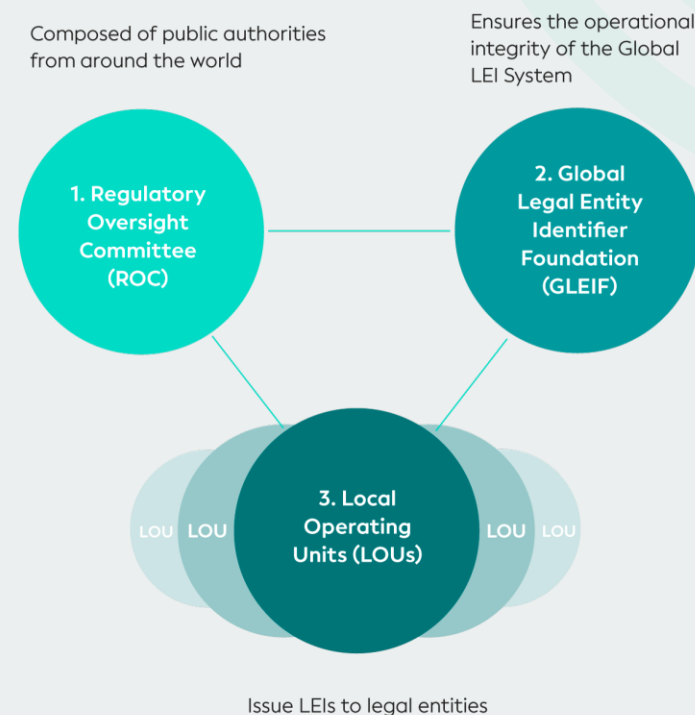
15 June 2023

Clare Rowley, Head of Business Operations  
Global Legal Entity Identifier Foundation (GLEIF)

# Who is Global Legal Entity Identifier Foundation (GLEIF)

- GLEIF is a not-for-profit Swiss foundation, founded by the Financial Stability Board (FSB).
- GLEIF is overseen by the Regulatory Oversight Committee (LEI ROC) with
  - **71 regulators** and
  - **19 observers**
  - from **50 countries**,  
*including Swiss National Bank and State Secretariat for International Finance*
- GLEIF Board has **18 independent directors**
- **38 accredited Partners** for LEI issuing (*Federal Statistical Office in Switzerland*)
- **> 2,3 million issued LEIs** to date (*20,000 LEIs in Switzerland, 1,5 million in Europe*) available as open data without IP or copyright protection.

The Financial Stability Board (FSB) and the Group of Twenty (G20) have endorsed the LEI, Global LEI System and GLEIF.



# The LEI

- The LEI is a life-long identifier **owned** by the respective legal entity.
- It points to the associated reference data.
- The LEI is an ISO standard ISO 17442

National  
Registration  
Identification  
information

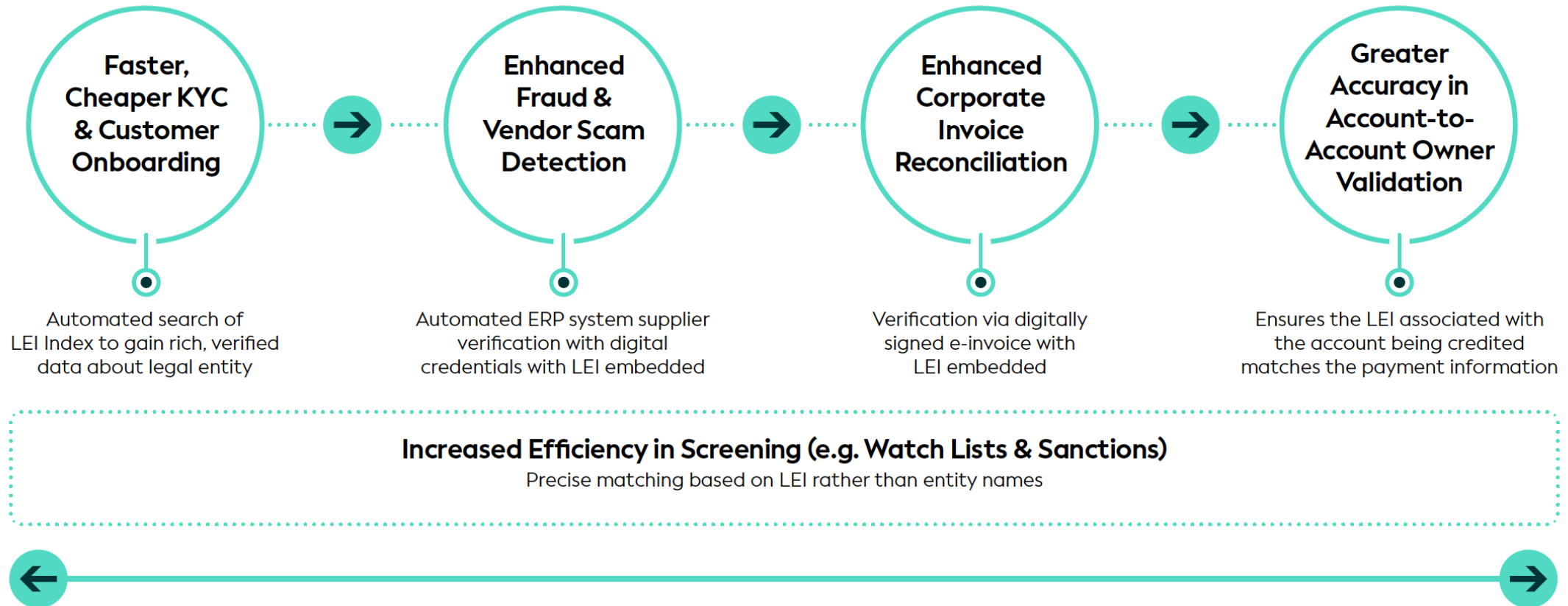
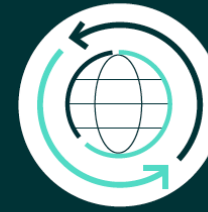
ฟิลลิป มอริส (ไทยแลนด์) ลิ้มเต็ด สาขาประเทศไทย	
as of 2023-02-13T08:00:00Z	
Current Data	Events and Changes
Show XML	vLEIs
LEI Code 2549006E8TVPIEXDSR48	
Hide	
(Primary) Legal Name	ฟิลลิป มอริส (ไทยแลนด์) ลิ้มเต็ด สาขาประเทศไทย
Transliterated Names	Philip Morris (Thailand) Ltd.
Registered At	Business Register (Department of Business Development (Ministry of Commerce)) Thailand RAO00554
Registered As	0100534004635
Jurisdiction Of Formation	TH
General Category	GENERAL
Entity Legal Form	บริษัทจำกัด
Entity Status	ACTIVE
Entity created at	1991-10-31T00:00:00Z
S&P Global Company ID	565907375

Parents	
Hide	
Parents	
Published Relationship Lapsed Relationship Reporting Exception	
Philip Morris International Inc. (Direct Parent) Philip Morris International Inc. (Ultimate Parent)	
Children	
Hide	
Direct children (1)	
Published Relationship Lapsed Relationship	
ฟิลลิป มอริส (ไทยแลนด์) ลิ้มเต็ด สาขาประเทศไทย	
บริษัท ฟิลลิป มอริส เทรดดิ้ง (ไทยแลนด์) จำกัด (Direct)	
Ultimate children (0)	
Published Relationship Lapsed Relationship	
No ultimate child data available for ฟิลลิป มอริส (ไทยแลนด์) ลิ้มเต็ด สาขาประเทศไทย	

<https://search.gleif.org/#/record/2549006E8TVPIEXDSR48>



# The Value of the LEI in Cross-Border Payment Flows



\*Use cases are based on the [Payment Market Practice Group White Paper: Global Adoption of the LEI in ISO20022 Payment Messages – 2021](#)

## Showcase of the LEI in the ISO20022 payment messaging chain for full transparency, traceability and automation



- Originator **does not have to remember or manually type the LEI** of the beneficiary.
- Originator can verify the beneficiary via the LEI **without any language limitations**. This includes **legal name** and **legal address**.
- Originator can **verify the IBAN (if available) and bank details of the beneficiary**.
- Originator can authorize the payment with **one click**.

# Don't do Business in the Dark: LEI for Enhanced Cross-Border payments

ฟิลลิป มอริส (ไทยแลนด์) จำกัด สาขาประเทศไทย



## Limitations

- This presentation contains confidential and proprietary information and/or trade secrets of the Global Legal Entity Identifier Foundation (GLEIF) and/or its affiliates, and is not to be published, reproduced, copied, or disclosed without the express written consent of Global Legal Entity Identifier Foundation.
- Global Legal Entity Identifier Foundation, the Global Legal Entity Identifier Foundation logo are service marks of Global Legal Entity Identifier Foundation.